



A Course on Animal-Free Risk Assessment of Cosmetics and Cosmetic Ingredients

Renato Ivan de Ávila
Unilever

21st International Congress ESTIV | Barcelona | 23 November 2022



Outline

Brief overview of AFSA

Purpose and Scope of the Education and Training program

Animal-Free Risk Assessment overview

Structure & Coverage of the AFSA E&T program

The Animal-Free Safety Assessment Collaboration

The HSI-coordinated Animal-Free Safety Assessment (AFSA) Collaboration works to accelerate global adoption of a modern, species-relevant approach to safety assessment that will better protect people and our planet, and hasten the replacement of animal testing

COSMETICS



CHEMICALS



BIOLOGICALS



The Animal-Free Safety Assessment Collaboration

The HSI-coordinated Animal-Free Safety Assessment (AFSA) Collaboration works to accelerate global adoption of a modern, species-relevant approach to safety assessment that will better protect people and our planet, and hasten the replacement of animal testing

COSMETICS



AFSA Education and
Training in Animal-
Free Risk Assessment

CHEMICALS



BIOLOGICALS

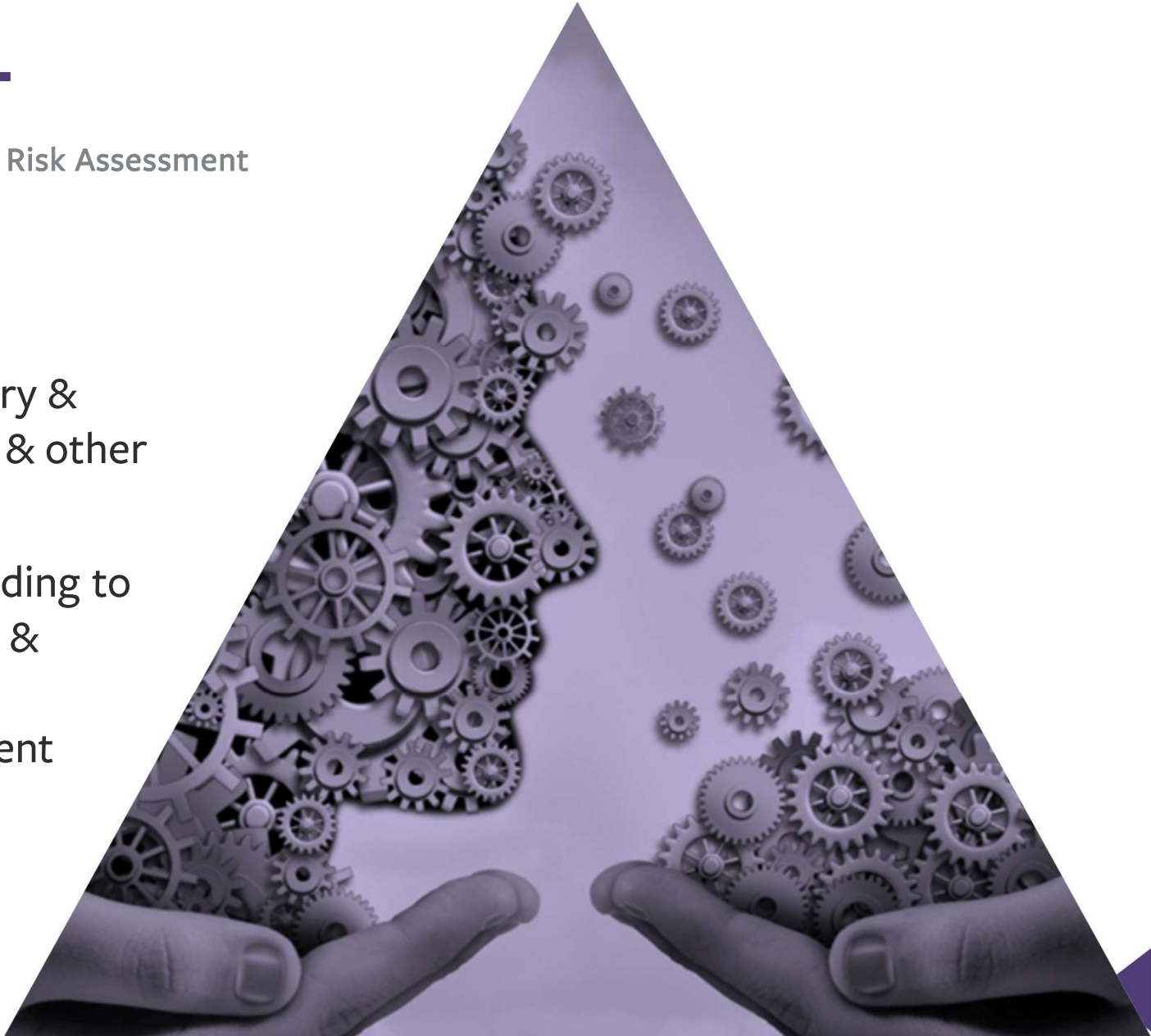


AFSA Cosmetics E&T

A Global Training Program in Non-Animal Risk Assessment

Purpose

- Address the needs of regulatory & regulated communities, CROs & other stakeholders
- Support regional capacity-building to achieve long-term acceptance & implementation of non-animal approaches to safety assessment



AFSA Cosmetics E&T

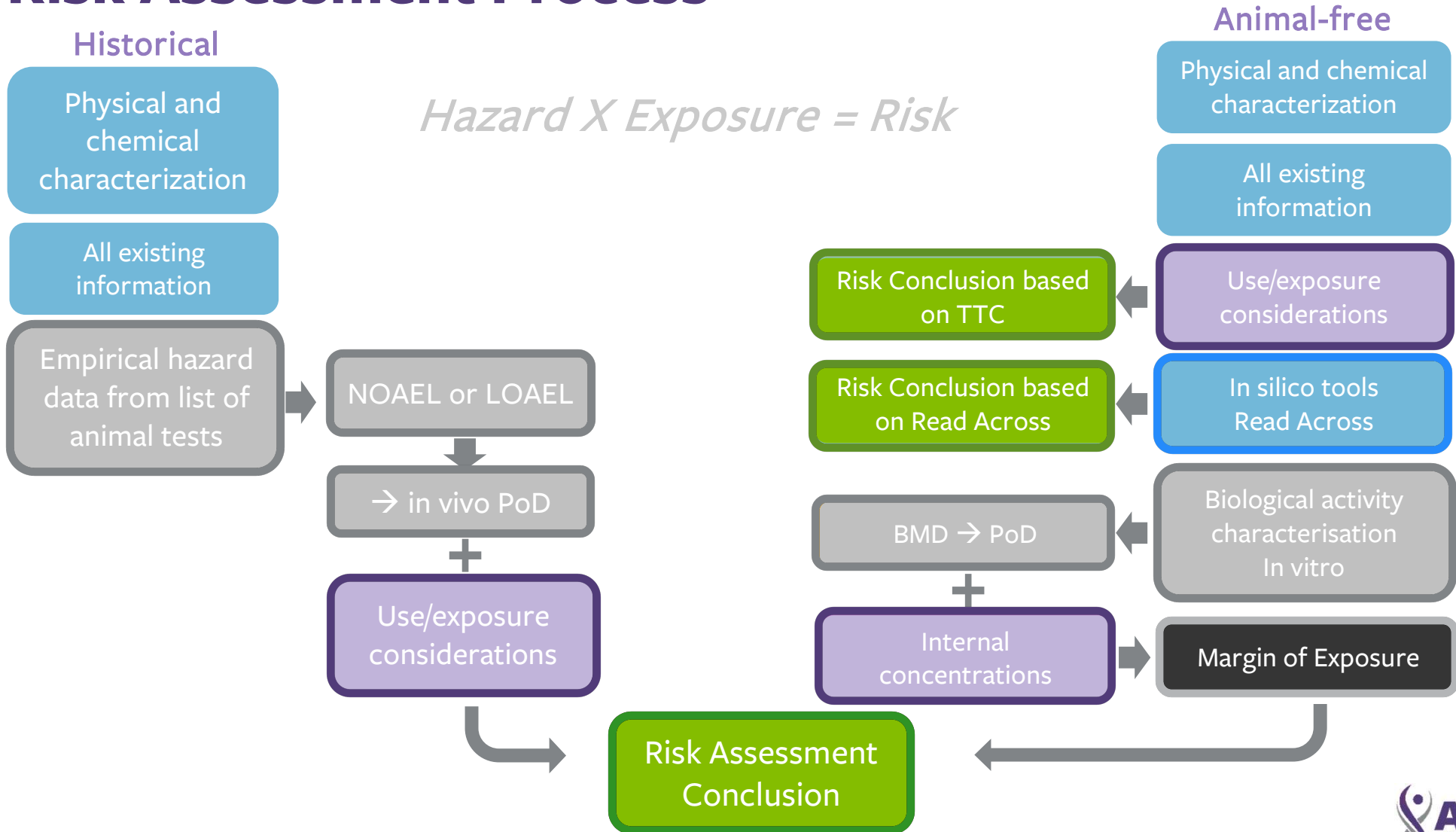
A Global Training Program in Non-Animal Risk Assessment

Scope

- Safety assessment of cosmetics and cosmetic ingredients without new animal data
- Covers all aspects of the process for internal and regulatory safety assessments
 - Consumer exposure, external and internal
 - Acute local effects to systemic repeat effects
- Covers the spectrum of available tools as well as some tools in development
- Focus on *understanding* the information generated from the tools and *how to use* this information vs. how to perform or build the individual methods

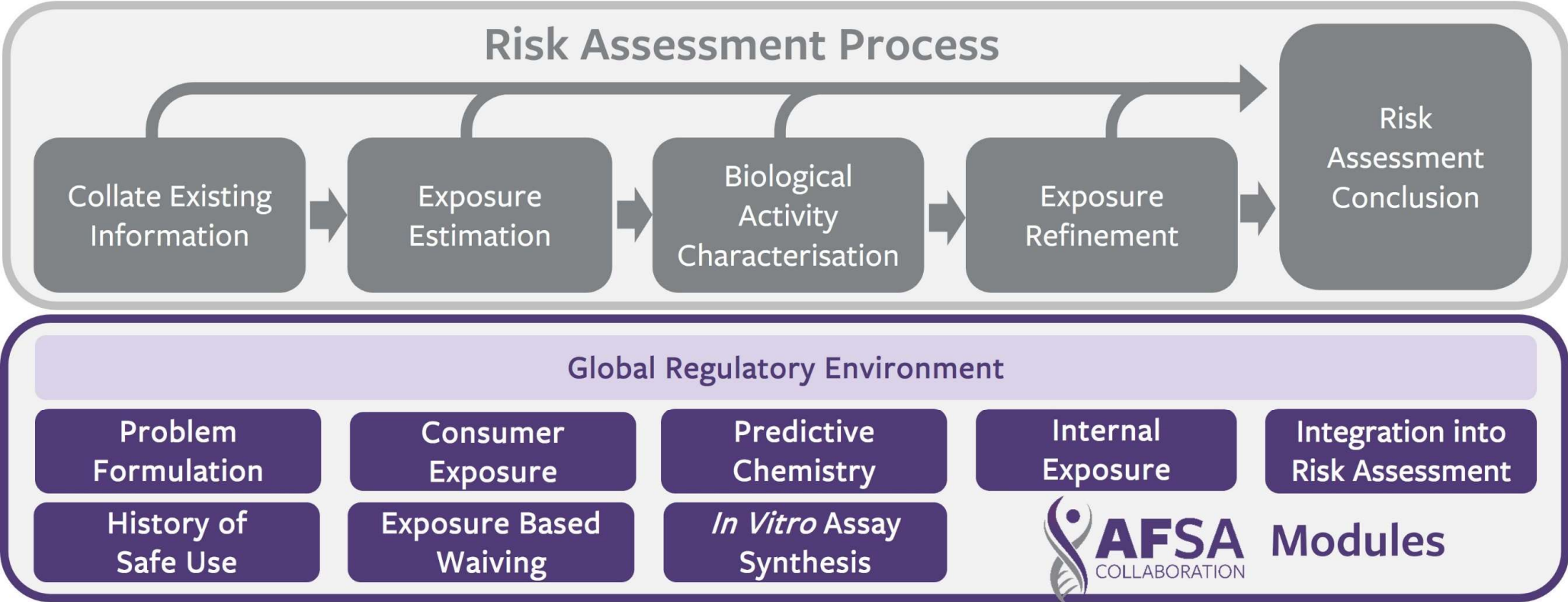


Risk Assessment Process

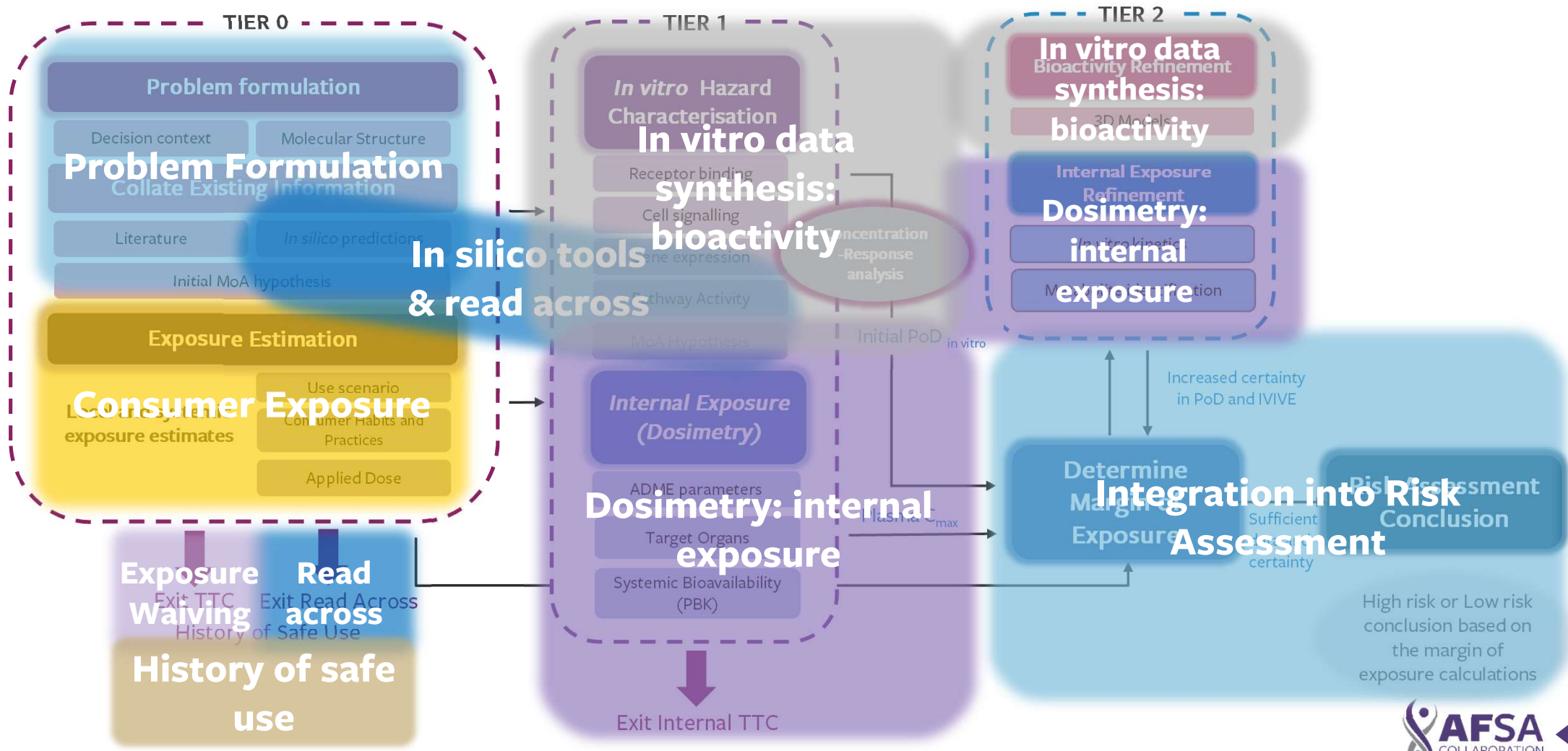


AFSA Cosmetics E&T

Covering Risk Assessment from start to finish



Next Generation Risk Assessment (NGRA) Framework



Education and Training Program

- Online, freely available
- Registration required
- Roll-out begins Q1 2023

Webinars



ZOOM WEBINAR

Thurs. April 14
13:00 – 14:30 GMT

CONSUMER EXPOSURE

Presented by AFSA Collaboration members:

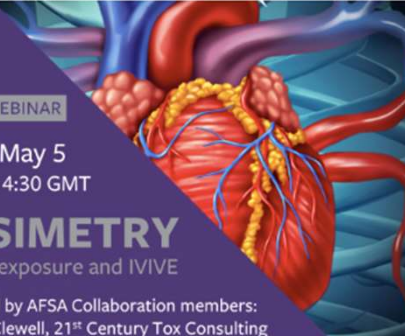


ZOOM WEBINAR

Tues. April 26
11:00 – 12:30 GMT

PREDICTIVE CHEMISTRY

In silico tools and read-across



ZOOM WEBINAR

Thurs. May 5
13:00 – 14:30 GMT

DOSIMETRY

Internal exposure and IVIVE

Presented by AFSA Collaboration members:
Rebecca Clewell, 21st Century Tox Consulting



ZOOM WEBINAR

Tues. May 10
11:00 – 12:30 GMT

GLOBAL REGULATORY LANDSCAPE

<https://www.afsacollaboration.org/cosmetics/capacity-building/>



Cosmetics Workstream Partners



HUMANE SOCIETY
INTERNATIONAL



THE HUMANE SOCIETY
OF THE UNITED STATES



L'ORÉAL



Firmenich

AVON

iff



Givaudan

symrise



LUSH



Delphic HSE
SAFETY & REGULATORY SOLUTIONS



Creme Global



Lhasa
Limited



IVS
Institute for In Vitro Sciences



AFSA Cosmetics E&T Authors

Name	Institute
Nathalie Alépée	L'Oreal
Eric Antignac	L'Oreal
Hind Assaf Vandecasteele	L'Oreal
Franck Atienzar	L'Oreal
Chris Barber	Lhasa Ltd
Catherine Barrett	Unilever
Sage Begolly	IFF
Dagmar Bury	L'Oreal
Rebecca Clewell	21st Centruy Tox
Renato Ivan de Ávila	Unilever
Matt Dent	Unilever
Ann Detroyer	L'Oreal
Swatee Dey	Procter & Gamble
Hermine Dika Nguea	L'Oreal
Shashi Donthamsetty	IFF
Graham Ellis	Firmenich
Corie Ellison	Procter & Gamble
Emma Garfield	Unilever
Françoise Gautier	L'Oreal
Peter Griem	Symrise
Julia Head	Unilever
Christina Hickey	Firmenich
Erin Hill	IIVS
Lisa Hoffman	Avon
Jay Ingram	Delphic HSE
Ramez Labib	Avon
Gregory Ladics	IFF
Uma Lanka	Education Consultant
Sophie Loisel-Joubert	L'Oreal

Name	Institute
Donna Macmillan	HSI
Bianca Marigliani	HSI
Boris Müller	Symrise
Fungai Mushakwe	Unilever
Jay Nash	Procter & Gamble
Andreas Nastch	Givaudan
John O'Brien	Crème
Anax Oliveira	Lhasa Ltd
David Onyango	Procter & Gamble
Gladys Ouédraogo	L'Oreal
Christian Pellevoisin	L'Oreal
David Ponting	Lhasa Ltd
Katy Przybylak	Unilever
Jia Qunshan	Procter & Gamble
Hans Raab	IIVS
Chloe Raffalli	LUSH
Allison Reis	Procter & Gamble
Georgia Reynolds	Unilever
Vanessa Rocha	Givaudan
Paul Russell	Unilever
Allison Schafer	Procter & Gamble
Schappacher, Katie	Procter & Gamble
Wendy Simpson	Unilever
Charlotte Thorpe	Unilever
Adama Traore	Givaudan
Espe Troyano	Procter & Gamble
Jaya Vethamanickam	Unilever
Carl Westmoreland	Unilever
Catherine Willett	HSI

Thank you!

Renato Ivan de Ávila, PhD
Safety Scientist - Toxicology
Unilever Safety & Environmental Assurance Centre

Renato.de-Avila@unilever.com

Catherine Willett, PhD
Sr Director, Science & Regulatory Affairs
Humane Society International

Kwillett@hsi.org